



NALLAMAS

EUROPA

SERENITY BEGINS HERE

YOUR EDEN
COMES WITH
YOUR
INSIGNIA



SPECTACLE
MEETS SERENITY



Actual View



MAKE THE MORNING
YOUR MUSE

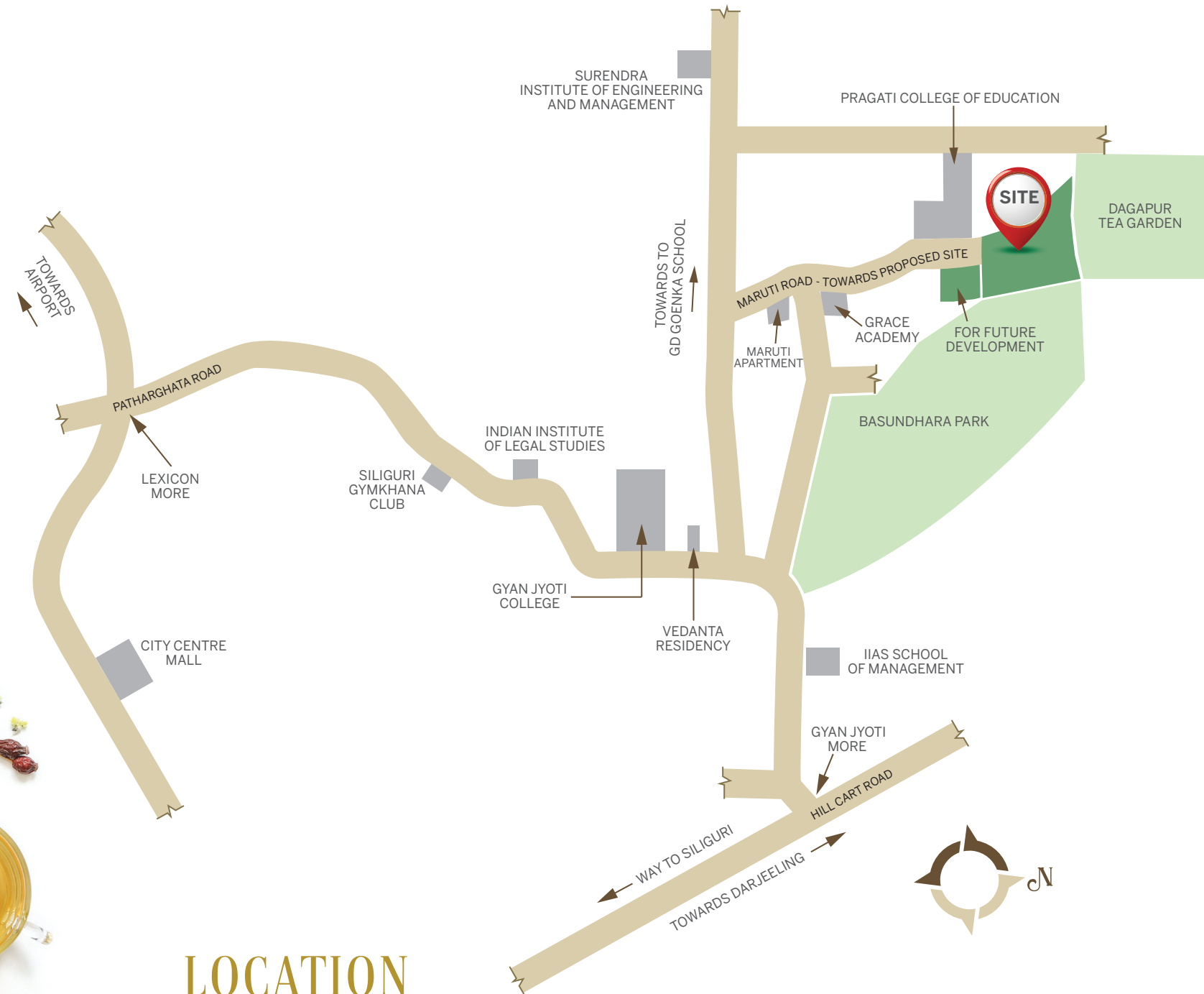
Actual View



MAJESTY
AND MYSTIQUE
ARE BECKONING YOU


NALLAMAS
EUROPA
SERENITY BEGINS HERE

7
STAR LIVING
★★★★★



LOCATION

The project is located amidst nature having a lush green tea garden in the north, and a forest on the east. It is an almost zero pollution area yet close to the city with most of the basic amenities being available nearby within walking distance.

Europa is located in the education hub of Siliguri with most of the Institutions being within walking distance.

The project is located very close to entertainment zones like hotels, clubs, cinemas, shopping malls. Retreat to your solitude when you have had your fill.

Europa is a sacred grove of modern living, 500 metres away from NH 10 – Gyan Jyoti More.

LOCATIONAL ADVANTAGES

HOSPITALS

Neotia Healthcare

5.4 kms (14 mins)

Asian Institute of Nephrology & Urology

7 kms (20 mins)

Greenage Hospital

3.6 kms (10 mins)

MARKETS

Salbari Market

5.4 kms (7 mins)

City Center Mall

4.9 kms (15 mins)

MULTIPLEXES

Cinemax

2.5 kms (7 mins)

Inox

4.9 kms (15 mins)

SCHOOLS

Pragati College of Education

0 km (1 min Walking Distance)

Surendra Institute of Engineering

450 mtrs (1 min Walking Distance)

G.D. Goenka Public School

1 km (3 mins)

Delhi Public School

1.3 kms (3 mins)

Mahbert High School

2.6 kms (7 mins)

Techno India

3.7 kms (12 mins)

Gyan Jyoti College

900 mtrs (3 mins)

UTTARAYON TOWNSHIP

4.9 kms (13 mins)

CLUB

Blue Mountain Country Club

2.4 kms (7 mins)

BANK

Central Bank of India

1.3 kms (5 mins)

Bank Of Baroda

4.7 kms (19 mins)

State Bank of India (Salbari)

5.4 kms (7 mins)

HOTEL

MayFair Tea Resort Siliguri

5.8 kms (13 mins)

Barsana Hotel & Resort

4.4 kms (12 mins)

The Four Vedas

7.9 kms (17 mins)



SILIGURI'S
MOST COVETED
TOPIC OF
DISCUSSION






The Europa Experience



NALLAMAS

EUROPA

SERENITY BEGINS HERE

-  G+2 Townhouses
-  5 Bed Luxury Residences
-  Exquisitely designed Central Vista
-  Luxury point Location
-  World class View
-  Dedicated Club



AFFLUENCE HAS A NEW ADDRESS, IN SILIGURI

Unleash the aristocrat in you.
Step into a painted page of a fantastical story
of refined living. Elegance comes to nest at
Europa. It is the cradle of luxury
and the epicentre of panache.



LUXURY
IS AN
ATTITUDE

Elan is not a choice. It's a calling. For those who live their lives immersed
in the poetry of luxury and exotica,
Europa is the Promised Land. It is the Shambala of aspirations, the El Dorado
of opulence, and the paradise of grandeur.



THE ART OF LIVING, PERFECTED FOR YOU

You are standing at the confluence of art and life. Europa is a marriage between the sublime aesthetics of unsullied nature and the precise alchemy of modern design. When they come together, they give birth to an experience that is suffused with ineffable grace.



REST IN THE NEST OF SUBLIME LUXURY

Every nuance of human desire has been distilled into the conception of this urbane living experience. It wants for nothing. As such, at the end of the day, you will want nothing more than retiring to your own slice of personal Eden.

SERENITY
IS CALLING
YOU HOME



BECOME
A CONSORT OF
THE EVENING.
EVERY EVENING

Dedicated terrace for every townhouse



NALLAMAS
EUROPA
SERENITY BEGINS HERE

Adda Zone



Beautiful landscaped garden



Senior Citizens' Sitting Area



24x7 Power Backup



24x7 Security with
CCTV Surveillance



WHERE SOLITUDE SINGS TO SOLACE

Life at Europa is a variegated mixed bag of delights. Some delights are laced with good cheer, merriment and camaraderie, while others await you in covert corners, far from the madding crowd of society and its exhibitions. Lose yourself to the sublime silence of solace.

RAISE A TOAST TO CARPE DIEM



CLUB
EQUINOX

Seize the day, serenade the evening, and woo the night. The world might be your oyster, but this slice of solitude is your very own corner of paradise. Let your hair down at the end of a long, harrowing day. Equinox will welcome you with effervescence and ecstasy.

LET SPARKS FLY

Catch a fleeting glance. Snatch a passing smile.
Unwind at the pool and watch the evening weave mischief
and magic with words and moonlight.



Swimming pool with attached
baby pool & changing rooms,
shower area

CLUB
EQUINOX



AC Banquet hall
for hosting parties

THE CONFLUENCE OF DREAMS

Pull away the veil that separates your life from your dreams.
At the nexus of desire and determination lies Europa.
All you need to do is step up.

CLUB
EQUINOX

IT'S YOUR BODY. MAKE IT HAPPEN

Celebrate the agility that comes with a wholesome, indefatigable lifestyle. Unleash the dynamism of exalted living and seize the day, every day.

*"Fitness
it's a way
of life"*

NEVER
GIVE
UP



Well-equipped multi gym

CLUB
EQUINOX

MAKE YOUR OWN RULES

All work and no play makes Jack a dull boy. Fortunately, you don't have to spend one dull moment here. When you're not basking in the glory of serene greenery, head to the games room and engage with the frivolities that give life meaning.

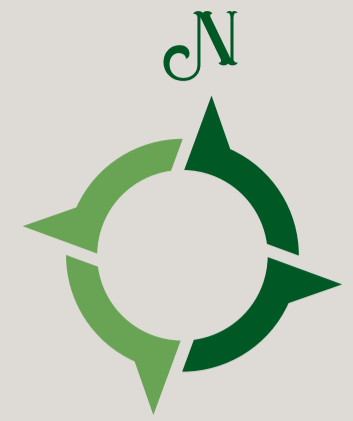


AC indoor games room with pool tables, table tennis, dart, carom and more

CLUB
EQUINOX



NESTLE
IN THE ARMS
OF SUBLIME
LIVING



Sigma		
	Carpets Area (in Sq. Ft.)	Built Up Area (in Sq. Ft.)
Ground Floor	614.8	824.4
First Floor	691.4	832.5
Second Floor	614.8	808.29
<hr/>		
Open Area		
Front Yard	63.65	
Backyard	162.8	
Terrace	427.16	

Beta		
	Carpets Area (in Sq. Ft.)	Built Up Area (in Sq. Ft.)
Ground Floor	614.8	810.5
First Floor	691.4	817.9
Second Floor	614.8	794.35
<hr/>		
Open Area		
Front Yard	63.65	
Backyard	162.8	
Terrace	427.16	

Theta		
	Carpets Area (in Sq. Ft.)	Built Up Area (in Sq. Ft.)
Ground Floor	614.8	823.95
First Floor	679.53	807.8
Second Floor	679.53	807.8
<hr/>		
Open Area		
Front Yard	NIL	
Backyard	156.1	
Terrace	420.27	

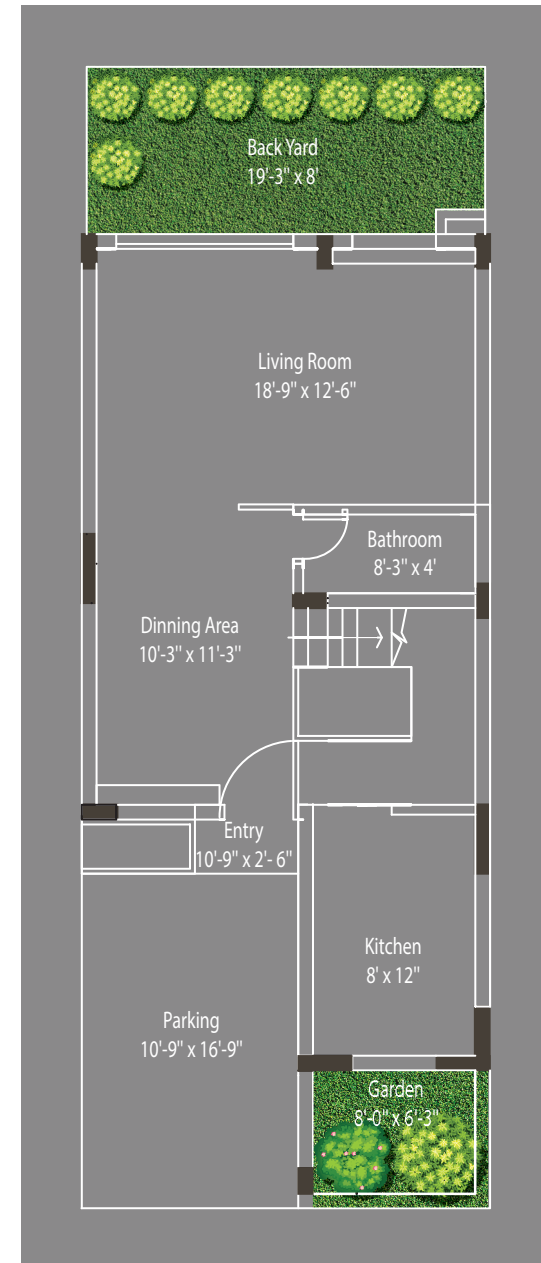

 NALLAMAS
EUROPA
 SERENITY BEGINS HERE

**MARK AND
 CHOOSE
 YOUR TOWNHOUSE**

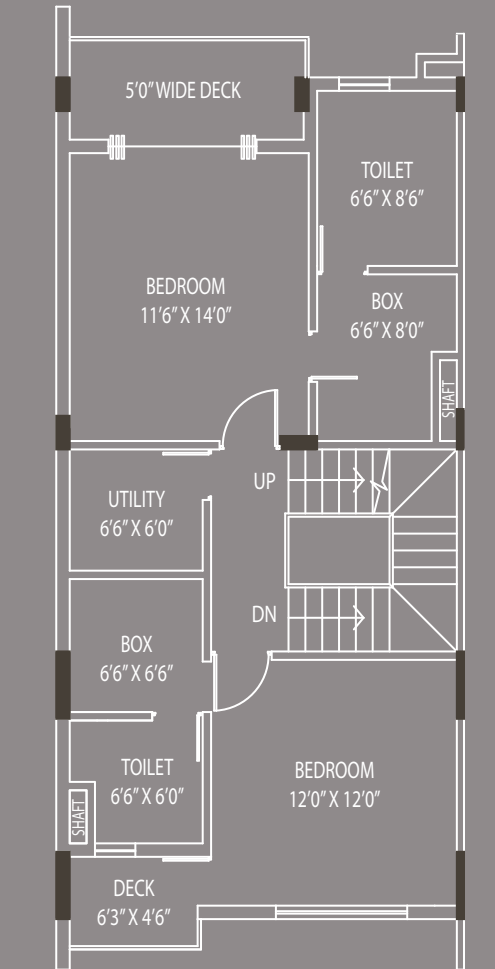
FLOOR PLANS

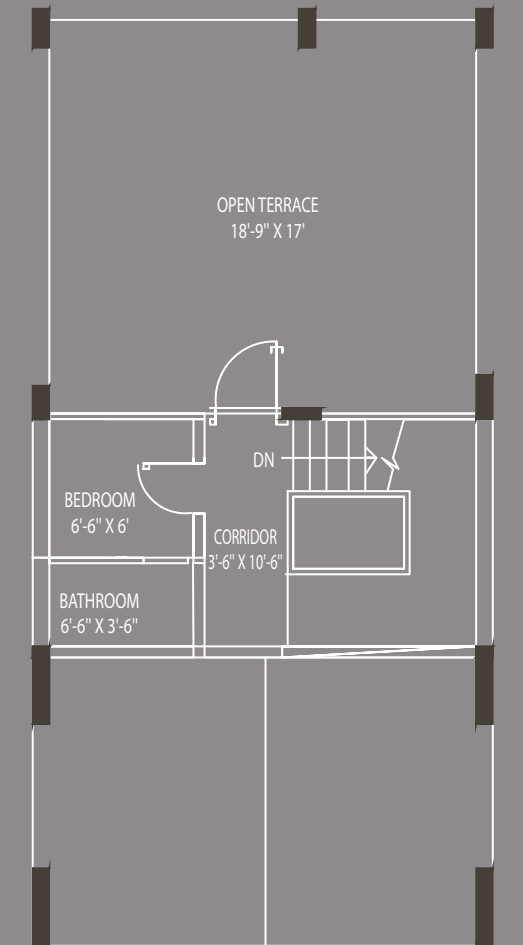
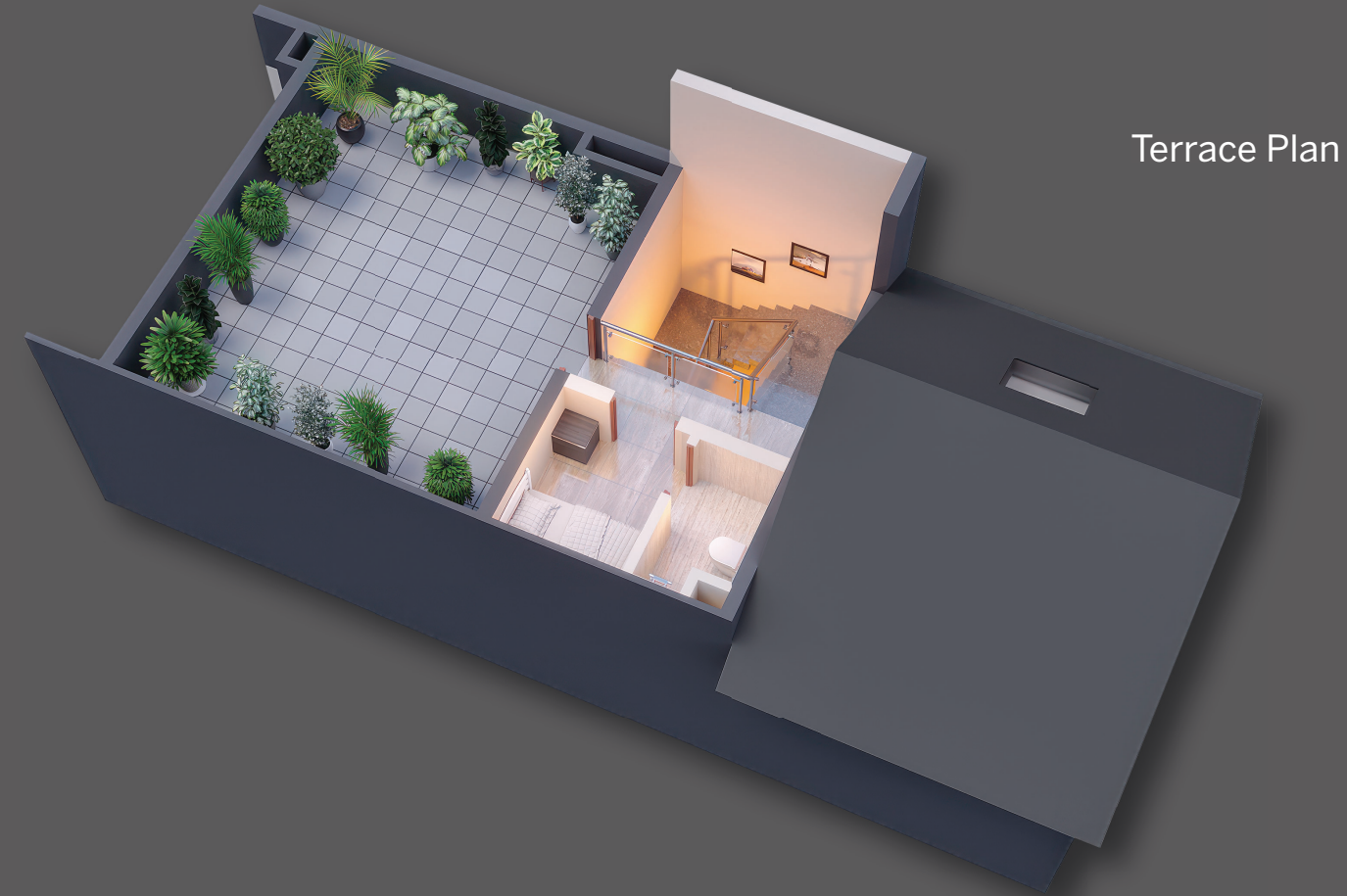
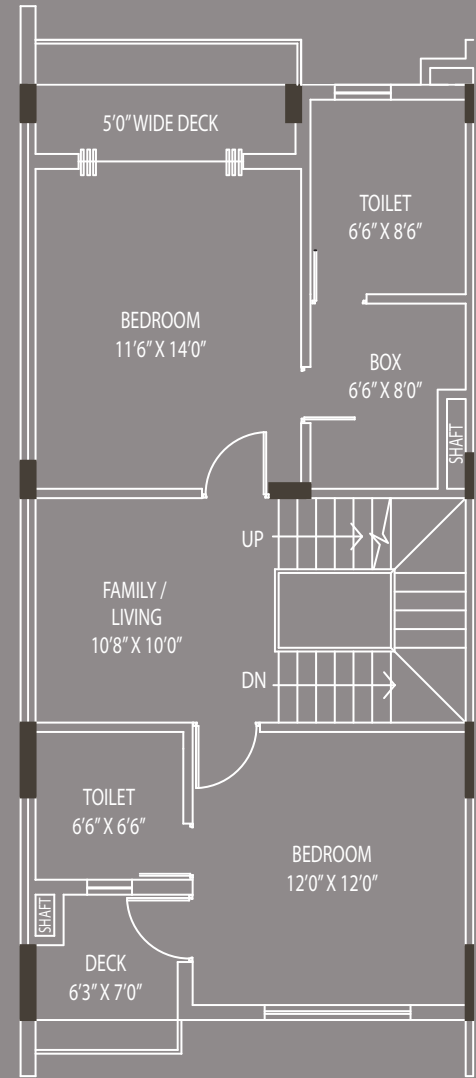


Ground Floor Plan



1st Floor Plan





SPECIFICATIONS



STRUCTURE

RCC Foundation as per Geotechnical Engineers recommendations



DOORS

Premium Quality Flush Doors



WINDOWS

Premium Quality UPVC Windows (White)



Floor – Anti Skid Ceramic Tiles



Wall – Ceramic Tiles up to dado height



Pipeline – Hot and Cold-water supply for shower and basin



Sanitary – White Sanitary ware of Reputed Brand



Fittings – Chrome plated fittings of reputed brands



ELECTRICALS

Concealed copper wiring with modular switches



Adequate light and power points

Standard main distribution box (DB)

TV/Telephone Points

AC Points in all rooms



KITCHEN

Counter Table – Granite Top with Stainless Steel Sink

Walls – Ceramic Tiles up to 2 feet height



WATER

24 hrs uninterrupted Water Supply



FLOORS

Drawing & Dining – Vitrified Tiles

Stairs – Granite

Bedrooms – Vitrified Tiles

Master Bedroom – Wooden Finish Vitrified Tiles

Green Hill Group is a melting pot of modern-day innovations and timeless values. We are one of the leading real estate developers in Siliguri, engaged with projects in the heart of the city. Our enterprise is driven by our compulsion to provide quality living spaces and sustainable lifestyle solutions to every member of society, regardless of their walk of life. We have also forayed into corrugated packaging services to provide improved and enduring corrugated boxes. We are also into other value-added services that aspire to return to the community.



Green Escape



Green Delight



Green Exotica



Green Ville



Established in 1998, CP Real Estate is one of Siliguri's premier real estate developers operating in the residential, commercial, retail, health and hospitality sectors. With a robust track record of 19 completed projects of 1.2 Million sqft, delivered to over 800 happy families. It currently manages a portfolio of 3 ongoing projects, including the first Green Building of North Bengal named "CP GREENS". Today, the Group's focus on quality has led it to become an industry leader renowned for trust and quality along with on-time-delivery. To enhance the growth of the Company, we will continuously improve our current systems for creating an ecstatic experience for our clients.

The Company assures Quality, Leadership, Finesse and Brilliance to our customers.



CP-Avenue



CP Green



Nirvana Homes



CP Universe



PRABHAT DESIGN STUDIO

Architect Prabhat Machhar is the brain behind this exquisite project - Europa.

Graduated in 2007 from NIT Jaipur, he has worked with a leading architectural firm in West Bengal for 13 years and has a total experience of more than 15 years in the field of architecture. He has contributed in various landmark projects in and around Kolkata.

Europa has been conceived and designed aesthetically with an European theme in mind.

Mr. Machhar's passion & personal touch with an innovating mind towards design is what makes this project unique by itself.



Architect Prabhat Machhar

Impact Creative Services Pvt. Ltd. began its journey in 1992, with Abhijit Sarkar at the helm. Since then, it has added quite a few feathers in its cap. Impact has worked closely with illustrious national clients like Tata Steel and ITC, not to mention a host of corporate houses in eastern India. Here's an agency that has perfected the art of digital communication and has gradually nurtured its very own in-house team so that it could specialise in print and television releases as well. It also has an exhibition wing, started 15 years ago, that has claimed several awards and accolades through the course of its journey.

Teamwork, quick response time and meticulous workshops underscore Impact's creative aims.

IMPACT
CREATIVE SERVICES PVT. LTD.